

Royal Borough of Windsor & Maidenhead Environment and Climate Strategy 2020-2025

IMPACT REPORT



CONTENTS	
FOREWORD	3
INTRODUCTION	4
KEY EVENTS AND DATES	5
1. CIRCULAR ECONOMY	6
2. ENERGY	8
3. NATURAL ENVIRONMENT	10
4. TRANSPORT	12
APPENDIX	14
SECTION 1: BOROUGH CARBON EMISSION REPORTING	14
SECTION 2: COUNCIL EMISSION REPORTING	15
SECTION 3: UPDATE AGAINST ACTIONS	16
1. CIRCULAR ECONOMY	17
2. ENERGY	19
3. THE NATURAL ENVIRONMENT	22
4. TRANSPORT	25

FOREWORD

We're committed to creating a cleaner, greener, safer and more prosperous borough, where we work with the community to achieve a sustainable future. Our Environment and Climate Strategy was developed in 2020 with the input of many residents, community groups, officers and councillors and we remain committed to this strategy. We're proud to say that we are in the top 10% of local authorities with the largest carbon reduction between 2018 and 2022¹.

We have been encouraged by the wide support from the community and are inspired by the work of our partners including the 'Wild' groups, the Eco-action hub, Friends of parks groups and so many others. If you're not yet involved there are plenty of opportunities available, whether that's a longer-term commitment such as adopting a verge, a one-off volunteering opportunity with a community group or perhaps embracing nature at one of our popular events at Braywick Nature Centre. You can find out more in the [Environment and Sustainability Hub](#) on the RBWM Together site.

The Sustainability Supplementary Planning Document (SPD) development and implementation is the result of collective effort across council and engagement with stakeholders. The SPD is used by developers, planning officers and planning committees to make better decisions when building and refurbishing properties in our borough. The SPD supports the policies of the Borough Local Plan by setting out measures to design and construct new development to improve its environmental performance and reduce its environmental impact, including mitigating and adapting to climate change.

In October 2024, we held our first ever Climate Partnership Conference with over 120 attendees and bringing together over 50 different community groups including educational organisations and institutions, local businesses, neighbourhood associations, faith groups and many others.

Our Sustainability Team has been strengthened and we've provided training to members and officers to make better decisions aligned to our climate and sustainability goals. As Leader of the Council and Lead Member for Biodiversity and Climate, we have both completed Carbon Literacy training to ensure we have the skills to embed climate change into all decisions we make as an authority.

We have come a long way since 2020 but we know there is still much to do and we will continue to take action on the climate and biodiversity crisis. We know, however, that as a council, we cannot achieve the level of action required alone and therefore we ask for the continued support of our residents, community groups and businesses to ensure the Royal Borough plays its part in delivering a sustainable future.



Cllr Karen Davies
Lead Member for Climate,
Biodiversity and Windsor
Town Council



Cllr Simon Werner
Leader of the Council

¹ See Appendix, Section 1

INTRODUCTION

The Royal Borough's Environment and Climate Strategy 2020-2025 was published in December 2020 and sets out our vision.

A borough where the community collectively works together to achieve a sustainable future; by protecting and enhancing our natural environment and achieving rapid decarbonisation to net zero carbon emissions by 2050 at the latest.

The strategy identified the four key themes and this document sets out our progress against each of the themes. The main sections contain our key successes, our plans for the near future and how you can get involved. The Appendix details our progress against each of the actions set out in the strategy.



Circular economy

Circular Economy refers to more sustainable resource use. Attention will be focused on reducing waste, encouraging material re-use, increasing recycling and supporting less resource intensive lifestyles.



Energy

67% of the borough's emissions are a result of energy consumption in buildings. Reducing our energy consumption, decarbonising our supply of energy and increasing local renewable energy generation is therefore key to realising the borough's net zero emission ambitions.



Natural environment

We will take action to protect and enhance our environment. In doing so this will help protect the ecosystem service benefits we receive (e.g. clean air and water), tackle climate change, create great places to live and support residents' health and wellbeing.



Transport

As a local authority, we will reduce the need for carbon intensive travel by encouraging walking and cycling as well as investing in digital infrastructure. We will create conditions for sustainable travel through the provision of infrastructure such as cycle routes and electric vehicle charging points and minimise air pollution impacts of road traffic by encouraging cleaner vehicles.

KEY EVENTS AND DATES



1. CIRCULAR ECONOMY

Aim: Reduce waste and consumption, increase material re-use and increase recycling rates in the borough

Our successes

The recycling rate has increased from 44.3% to 47.1% over the past 4 years (2018/19 to 2022/23). The Royal Borough is now in the top 100 councils in the country for recycling. Our successes against the three objectives set out in the Environment and Climate Strategy 2020-25 are set out below.

1. Improve recycling rates

- We've created a [recycling facilities map](#) for residents.
- We're continuing to work with [ECO Action Hub](#) to promote recycling.
- We continue to raise awareness and encourage recycling of plastics particularly single-use plastics and food waste through the resident newsletter, promotional campaigns and events.

2. Encourage waste avoidance and material reuse through our services/operations

- We've focused on reducing single-use plastics with recommendations made to service areas.
- We've supported better procurement practices by developing and embedding sustainable procurement practices across the council.
- We continued to provide allotments for residents to grow their own vegetables and promote healthy plant-based eating.

3. Champion waste reduction in the wider community

- We continue to support Swap Shops for Halloween and World Book day.
- We've promoted plastic free options including some of our local [plastic-free shops](#).
- We're supporting businesses to reduce waste through the [Climate Partnership](#).

We are indebted to the Royal Borough for giving us discretionary charitable relief for our Green Skills Library hub, and now as we plan our expansion to cover training and increased voluntary work, alongside improved health and wellbeing, all the while reducing the carbon footprint within the greater Maidenhead area.

*Donna Stimson,
Green Skills Library*

The Royal Borough is now in the top 100 councils for recycling. By continuing to drive forward Refuse Reduce Reuse Repurpose and Recycle, residents are helping to save the planet, preserve scarce resources and save council tax in a triple win.

*Cllr Coe,
Lead Member for Household & Regulatory Services*



9.1% less waste collected from businesses and households¹



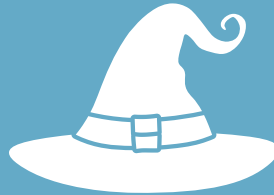
51.7% waste sent for recycling²



Climate partnership conference over 100 attendees³



8.2% increase in food waste collected⁴



Over **250** costumes swapped at Halloween Swap Shops⁵



Over **50** community groups at the Climate Partnership Conference⁶

What's next?

- Climate literacy training available to local businesses through the Climate Partnership in Spring 2025
- Sustainability business networking event planned for Spring 2025
- Assess feasibility of a material reuse shop in 2025

Get involved

[RBWM In-Store Recycling Facilities Map](#)
[Climate Partnership](#)
[Braywick Nature Centre | RBWM Together](#)
[Allotments in Maidenhead](#)
[Windsor Allotments and Home Gardens Association \(WAHGA\)](#)

[ECO Action Hub](#)
[Repair Café Maidenhead](#)
[Repair Café Windsor](#)
[Green Skills Library](#)
[Sign up for news and updates Residents newsletter](#)

Data sources:

1 Comparison between 2021/22 and 2022/23 [Understanding Waste Collection in Windsor and Maidenhead | LG Inform \(local.gov.uk\)](#)

2 For financial year 2022/23, as reported in Quarterly Assurance Report to [Cabinet on 30 October 2024](#). The measure is a key performance indicator (KPI) for the council and is reported on a quarterly basis.

3 Local data

4 Local data, comparison between 2019/20 and 2023/24

5 Local data for Halloween 2023

6 Climate Partnership Conference held 9 October 2024

2. ENERGY

Aim: Reduce energy consumption and decarbonise supply

Our successes

We've engaged with residents through RBWM Together, the council's website, our resident newsletter and World Café events. We've worked with our neighbouring authorities and other organisations to roll out new energy schemes such as Solar Together. We've established the Climate Partnership to work better with our local business and community organisations.

The [Sustainability SPD \(Supplementary Planning Document\)](#) provides guidance for developers to help them make decisions to benefit our environment. The council has appointed an officer to ensure planning applications comply with the guidance in the SPD. Our successes against the three objectives set out in the Environment and Climate Strategy 2020-25 are set out below.

1. Reduce energy demand

- We've supported national energy efficiency schemes for residents
- We've improved energy efficiency in schools. We've replaced oil boilers with air source heat pumps and installed double glazing, insulation, and solar panels and changing lighting to LEDs. This has been enabled by securing over £3 million from government.
- Our Sustainability SPD helps developers make better decisions when building in our borough and improve energy efficiency when refurbishing homes.

2. Decarbonise supply

- We've set up the [Climate Partnership](#) to bring together businesses, community groups and experts to instigate positive change locally.
- We've facilitated funding for residents to switch from oil to low carbon options for heating their home.

3. Increase renewable energy generation

- We've facilitated [Solar Together](#) to help our residents switch to solar power at a reasonable cost
- We've supported and invested in solar energy adoption for community buildings through Maidenergy
- We've mapped our heat network to help developers make better decisions

The council has been an invaluable source of support to ECO Action since the idea of developing our Hub first surfaced at a community meeting in January 2022. It endorsed the concept from the outset and provided ongoing advice and guidance. Most importantly and practically, it provided discretionary rates relief and help with utilities costs, without which the project could not have progressed.

*Graham Owens,
ECO Action Hub*

Across the country, the Royal Borough is in the top 10% of local authority areas for greatest carbon reduction. The borough's success in securing government funding for sustainable energy, lighting and insulation is making our schools and council buildings more comfortable, reducing emissions and saving money too.

*Cllr Davies,
Lead Member for Climate and Biodiversity*

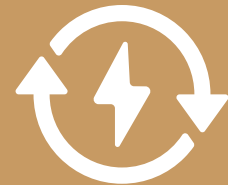


kt CO2

19% less carbon emissions¹



Over 200 solar installations on homes through Solar Together²



100% of electricity purchased by the council is from renewable sources³



In the top 10% of local authority areas in the country for largest carbon reduction⁴



Boiler replacement at the Windsor Guildhall will save 20 tonnes of CO2/year⁵



£3 million secured in grants to decarbonise our buildings including schools⁶

What's next?

- We'll be improving energy efficiency at Windsor Leisure Centre and Windsor Guildhall
- 'Climate Literacy' training for businesses through the Climate Partnership
- Continue to secure funding from Government to accelerate our decarbonisation plans

Get involved

[Energy and Sustainability](#)
[Environment and Sustainability](#)
[Sustainability Supplementary Planning Document](#)
[Climate Partnership](#)
[Solar Together](#)
[Maidenergy](#)

[Home energy grants](#)
[Eco action hub](#)

Data sources:

1 Appendix, Section 1

2 Local data. Solar panels installed as part of Solar Together programme across Phase 1 and Phase 2

3 Local data

4 Appendix, Section 1

5 Gas boiler at the Guildhall to be replaced with air source heat pump (ASHP)

6 Local data

3. NATURAL ENVIRONMENT

Aim: Cleaner air, higher water quality and increased biodiversity

Our successes

We created the [Biodiversity Action Plan 2022-26](#) (BAP) in partnership with 'Wild' community groups, Berkshire Buckinghamshire and Oxfordshire Wildlife Trust (BBOWT) and others. This is our plan to improve habitats in woodland, grassland, farmland, waterways, standing water and urban areas. We're reversing the decline in our natural environment and through better data, partnerships and direct action to increase biodiversity across the borough. Our successes against the three objectives set out in the Environment and Climate Strategy 2020-25 are set out below.

1. Protect and enhance our natural environment

- We want our habitats to be 'bigger, better and more connected' and we're leading the [Local Nature Recovery Strategy](#) (LNRS) for Berkshire which will help us have a bigger impact
- We've planted over 30,000 trees, rewilded parts of Ockwells and Battlemead, started wildlife-friendly mowing regimes at Kidwells and Windsor Cemetery and launched '[Verge on the Wild Side](#)'
- We've become a 'Peat Free Council'

2. Green our towns and urban areas

- We've launched the Waterways Partnership to bring together key stakeholders to maximise the potential of the Maidenhead Waterways
- We've provided new guidance for developers to help them make a better contribution to our natural environment when they build new developments.
- Rain gardens have been incorporated into highways improvement projects to mitigate flooding and improve biodiversity.

3. Increase awareness of biodiversity

- We offer children and young people biodiversity and climate learning opportunities at Braywick Nature Reserve through schools, community groups and special events.
- We're helping our colleagues and councillors make better decisions by providing Carbon Literacy training
- We run events and projects that promote nature-connectedness and wellbeing for adults, working with partners in the health and business sectors.

The six volunteer-led Wild groups across the Borough have valued working with the council's team to help deliver the initial Biodiversity Action Plan, which they were involved in creating. We welcome the council's commitment to urgent action to address the linked issues of climate change and biodiversity loss and we hope the findings from the Berkshire-wide LNRS will make the BAP even more relevant as the unique blueprint for protecting and enhancing nature locally.

*Maria Evans,
Wild Maidenhead*

We're reversing the decline in our natural environment in the borough. Partnership working, together with conservation volunteers, farmers and landowners, and neighbouring local authorities, is central to our progress towards achieving our target of '30 by 30', and to making our habitats 'bigger, better and more connected' through the BAP and the LNRS.

*Cllr Karen Davies,
Lead Member for Climate and Biodiversity*



1,500 children a year visit
Braywick Nature Centre¹



Over **30,000** trees planted at
Ockwells since 2020²



31 carbon literate colleagues³



26.4% of land for nature in the
borough toward our 30 by 30
target⁴



We employ **2** ecologists to
assess impact of development
on the natural environment⁵



8 carbon literate members⁶

What's next?

- Publish Local Nature Recovery Strategy (LNRS) in mid 2025. The LNRS will outline the priorities for nature recovery and propose actions in locations that will contribute to these priorities.
- Continue to deliver the Biodiversity Action Plan (BAP) in partnership with The Wilds
- Implement Biodiversity Net Gain (BNG), which is an approach to development, and/or land management, that aims to leave the natural environment in a measurably better state than it was before development. To enable this, cabinet have supported the development of habitat banks in the borough.

Get involved

[Wilds groups](#)
[Braywick Nature Centre events](#)
[Verge on the Wild Side](#)

[Wildlife Gardens Awards](#)
[Friends of Parks & Green Spaces](#)

Data sources:

1 Local data

2 Local data

3 Local data

4 Local data

5 Local data

6 Carbon literate colleagues, based on April-23-Sept-24

4. TRANSPORT

Aim: Enable sustainable transport choices

Our successes

We've consulted with residents and partners to produce our:

- Electric Vehicle Chargepoint Implementation Plan (ECVIP)
- Bus Service Improvement Plan (BSIP)
- Local Cycling and Walking Infrastructure Plan (LCWIP)

These form key pillars of our emerging Local Transport Plan (LTP). Our successes against the three objectives set out in the Environment and Climate Strategy 2020-25 are set out below.

1. Transform transport and digital infrastructure to reduce the need for travel

- We've created guidance for developers to ensure sustainable transport is better considered at the earliest stage of development
- We've worked with key organisations to increase the speed of internet connection ('full-fibre coverage'), improve the internet reliability in our more rural areas and improve the digital infrastructure across the county

2. Create infrastructure to shift journeys to low/zero carbon modes e.g. cycling, public transport

- We've improved walking and cycling environment in Maidenhead town centre and followed up with projects to make walking and cycling into town even easier, including convenient, safe crossings over the A4 road, a new bridge to Blackamoor Lane and traffic calmed streets in Norfolk Park.
- We've improved a 'quiet way' route into Windsor from Clewer Village, with nearly half a million journeys by foot and bike using this in the first year. This has included the introduction of new covered, access-controlled cycle parking at Windsor Leisure Centre on the route.
- We've run a successful trial of our first 'School Street' which gives parents and children the chance to walk or wheel in a safer and less congested environment, improving their health and cutting carbon omissions.

3. Invest in zero emission vehicle infrastructure

- We've secured £927,000 of funding from government, and are working to begin rollout of 75 chargepoints per year for the next 10 years.

The council has continued to widen active travel support through the Frog Bike and Bikeability education programmes; developing plans for School Streets with Sustrans; and liaising with the borough's LAF to further integrate cycling in multi-user engagement and PROW matters. Cycling, inclusion and climate groups have actively worked with the council to advise on infrastructure improvements, No Idling Zones and 20 mph zones initiatives; linked "low-carbon" travel benefits with biodiversity and natural environment goals; as well as ensured active travel is fully embedded in the Sustainability SPD.

*Susy Shearer,
Windsor & Maidenhead Cycling Action Group (W&MCAG)*

Our School Street trial at Wessex Primary has been a great success. There was a significant reduction in traffic and air pollution. Plus, an increase in active travel like walking and cycling to school, with many families adopting healthier habits. All in all, an excellent result!

*Cllr Hill,
Member for Highways and Transport & Customer
Service Centre*



Vehicle miles travelled down
6% since 2019¹



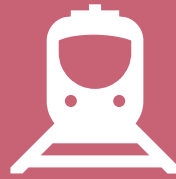
1m passenger bus journeys a
year²



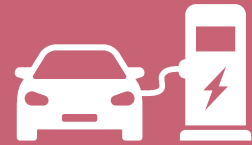
41% people walk or cycle at
least once a week for travel³



98.5% properties with good
quality broadband⁴



7.5m rail journeys a year⁵



154 chargepoints including at
Vicus Way, Braywick Leisure
Centre and on-street parking
through Connected Kerb⁶

What's next?

- The rollout of on-street EV chargepoints, likely to begin in Autumn 2025 dependent on Department of Transport approving the procurement process.
- We will be continuing to develop the Local Transport Plan.

More information

[Transport and streets | rbwm.gov.uk](https://rbwm.gov.uk)
[Transport | RBWM Together](#)

Data sources:

1 TRA8901 [Road traffic estimates \(TRA\) - GOV.UK](#) Motor vehicle traffic (million miles) by local authority. Point estimates for 2019 and 2023 used to calculate variance of -6%

2 2022/23, [Transport in Windsor and Maidenhead | LG Inform \(local.gov.uk\)](#)

3 2022/23, [Passenger journeys between local authorities | ORR Data Portal](#)

4 [Percentage of addresses with Next Generation Access in Windsor and Maidenhead | LG Inform, 2024, accessed 11/11/2024](#). Next Generation Access (NGA) is new or upgraded access networks that will allow substantial improvements in broadband speeds and quality of service raising the minimum expected standard.

5 2023, [Transport in Windsor and Maidenhead | LG Inform \(local.gov.uk\)](#)

6 Sept-24, local data

APPENDIX

Section 1: Borough carbon emission reporting

Across the country, the borough is in the top 10% of local authority areas for greatest carbon reduction between 2018 and 2022. The Department for Energy Security and Net Zero publish data annually on carbon emissions by local authority. The 2022 data was released in June 2024 and represents the latest position available. This delay makes it more difficult for local authorities to track progress. However, we acknowledge that the collation and publication of such a large amount of data does take time. It is also the standard way local authorities across the country track progress and allows all council's to track their progress compared to others which is a positive. Data is revised each year to take account of methodological improvements and historical data is revised accordingly.

The figure is an estimate in kilotonnes of carbon dioxide equivalent (kt CO₂e) emissions for sectors including industry, commercial, public sector, domestic, transport, land use, land use change and forestry (LULUCF), agriculture, and waste management. The figures exclude emissions which are not considered to be within the scope of influence of local authorities.

The purpose of these estimates is to assist those using local emissions accounting as a tool in developing emissions reduction strategies. It should be noted that circumstances vary enormously between authorities, and local authorities have relatively little influence over some types of emissions, and for these reasons these statistics should be interpreted with caution.

In 2018 the emissions from the borough within the scope of influence of local authorities were 705.7 kt CO₂e. In 2022 (the latest available data), emissions from the borough within the scope of the influence of local authorities were 574.7 kt CO₂e. Emissions have reduced by 131 kt CO₂e or 18.6% between 2018 and 2022. The table below compares the reductions in CO₂e emissions by other boroughs in Berkshire between 2018 and 2022 as well as the total for the South East of England and the national total.

Table 1: CO₂ emissions within the scope of influence of local authorities

Borough	2018 Emissions	2022 Emissions	% Reduction
Royal Borough of Windsor & Maidenhead	705.7	574.7	18.6%
Bracknell	464.0	386.1	16.8%
Reading	550.7	466.1	15.4%
Wokingham	623.5	532.0	14.7%
West Berkshire	859.2	739.5	13.9%
Slough	626.0	605.0	3.6%
South East Total	38,590.5	32705.1	15.3%
National Total	297,788.2	256,549.7	13.8%

Data:

UK greenhouse gas emissions: local authority and regional - data.gov.uk

CO₂ emissions estimates - Grand total (LA influence) in Windsor and Maidenhead | LG Inform

Section 2: Council emission reporting

The Council set out an ambitious target to reduce its organisation carbon emissions by 50% by 2025/26 compared to 2018/18 in line with the Tyndall Centre trajectory.

The scope of what is included in the council's carbon emissions is included in Appendix 1 of the Environment and Climate Strategy along with the baseline of 4,585tonnes.

The council regularly reports on its own emissions through its Quarterly Assurance Report and these were last reviewed at Cabinet in January 2025.

The latest available data shows the council has reduced its emissions from 4585 tonnes in 2018 to 3051 tonnes in 2023/24. This is a reduction of 33.46% which demonstrates significant progress towards a 50% reduction by 2025/26.

Work undertaken has included fabric and low carbon heating improvements in a number of schools, LED light upgrades in around 20 schools, solar panels being installed at the Braywick Nature Centre and work to enhance energy management practices to improve visibility of energy usage to better target improvements. There has been a 70% decrease in emissions from oil heating as it is phased out of the council's estate and replaced with low carbon heating.

It's important to recognise the council's commitment to purchasing 100% renewable electricity which means electricity used across its estate comes from solely renewable sources. This includes streetlighting, maintained schools, libraries and offices and means the carbon emissions associated with that consumption is zero. The council however continues to use government published carbon emission factors to measure its progress as a transparent form of measuring carbon emissions.

The council has also planted over 30,000 trees across its estate since the start of the strategy delivery period. The council has not using that planting to offset its emissions and continues to seek ways to drive down its emissions through efficiency and low carbon generation in line with best practice.

Year	Carbon emissions (tonnes)	% Reduction against baseline
2020/21	3903	14.87%
2021/22	3453	24.69%
2022/23	3247	29.18%
2023/24	3051	33.46%

Section 3: Update against actions

This section sets out our progress against each of the actions in the Environment and Climate Strategy 2020-2025.

Theme	Complete ●	On track ●	Planned ●
Circular Economy	9	1	1
Energy	9	1	1
Natural Environment	13	1	0
Transport	7	3	0
All themes	38	6	2

1. CIRCULAR ECONOMY

Action	Progress
KEY ACTION: Review household waste collection regime to deliver increases in recycling	<p>Complete ●</p> <p>The recycling rate has increased from 44.3% in 2018/19 to 47.1% in 2022/23.</p> <p>This increase has moved us into the top 100 councils in the country (95). Source: 2022/23 overall performance - letsrecycle.com</p>
Objective 1: Improve recycling rates	
Increase availability of recycling facilities	<p>Complete ●</p> <p>Online in-store recycling map was created to support residents to access local facilities.</p> <p>The council continue to support the ECO Action Hub which has opened a Terracycle recycling point for hard to recycle items.</p>
Increase awareness of Royal Borough recycling facilities	<p>Complete ●</p> <p>Awareness has been increased through a dedicated monthly Sustainability section in the staff and resident newsletters. There have been articles within the circular economy theme that help to broaden residents' awareness of recycling facilities within the borough. Plus additional awareness raising on key topics through RBWM Together a (e.g. 'Curbing Food Waste This Christmas' and 'Let's Get Real About Recycling' articles) and recycling campaigns such as Recycle Now's Recycle Week.</p>
Avoid food waste incineration by promoting uptake of the food waste collection service	<p>On track ●</p> <p>We have worked with the Public Health team to deliver a campaign on plant-based eating and encouraged the use of the food waste collection service, including through promotions like 'Curbing Food Waste This Christmas' on RBWM Together'.</p> <p>Over the past 5 years (to 2023/24), there has been an 8.2% increase in food waste collected which is good progress against the ambition of exceeding 10% by 2025.</p>
Objective 2: Encourage waste avoidance and material reuse through our services and operations	
Reduce single use plastic usage in our own estate	<p>Complete ●</p> <p>An internal environmental audit was undertaken to understand what single-use plastics were being used as a council and recommendations made to different areas.</p> <p>'Sustainable Procurement Checklist' document will ensure single-use plastics are reduced/eliminated in-house.</p> <p>The council has launched a Sustainable Events Award that encourages events across the Borough, including those held on council land, to eliminate single use plastic.</p>
Investigate the feasibility of a material reuse shop associated with the recycling and waste site	<p>Planned ●</p> <p>Feasibility study planned for 2025.</p>

<p>Provide opportunities for people to grow their own food</p>	<p>Complete ●</p> <p>Vegetable gardens at Braywick Nature Centre were created, to provide skills and knowledge to local residents on how to grow their own produce. This is regularly used by a home-learning group among others.</p> <p>The council continues to operate an extensive allotment portfolio to give residents access to space for growing food.</p>
<p>Objective 3: Champion waste reduction in the wider community</p>	
<p>Champion material re-use initiatives</p>	<p>Complete ●</p> <p>A successful Halloween Swap Shop was hosted in October 2022 and 2023 along with a World Book Day Swap Shop, which ensured that over 250 costumes were swapped between families. This reduced waste and consumption of new costumes, in addition to reducing money spent by residents during Halloween.</p> <p>The council has emailed all schools encouraging them to set up second hand uniform sales and the majority confirmed they already have.</p> <p>Volunteer-led Repair Cafes are running in both Windsor and Maidenhead. The council supported the set-up of Maidenhead Repair Café which is located in the ECO hub. The council supports the Green Skills Library, which uses recycled or donated materials to educate on sustainable practices. The council continues to support both the ECO hub and Green Skills Library with discretionary rates relief.</p>
<p>Support plastic free refillable shops and other plastic free schemes</p>	<p>Complete ●</p> <p>We raised awareness of the plastic free shops in the borough on RBWM Together.</p> <p>The ‘Plastic Free July’ campaign was run in July 2022, 2023 and 2024, which included publishing five articles on the Environment and Sustainability Hub on RBWM Together. In addition, articles promoting the campaign were published in the staff and resident newsletters.</p>
<p>Work with businesses to encourage reuse throughout their operations</p>	<p>Complete ●</p> <p>There has been positive business engagement in the council’s Climate Partnership, with businesses represented on the Steering Group. The October 2024 Climate Partnership Conference attracted over 100 attendees representing over 50 community groups. The community groups included environmental organisations, educational institutions, faith-based organisations, local businesses, neighbourhood associations and others.</p> <p>The Climate Partnership will build on their recent successes. They will deliver Climate Literacy training to local businesses and community organisations in 2025 to support their transition to a low carbon economy and also host a sustainability themed business networking event.</p>
<p>Encourage more plant-based food and promote buying local and seasonally</p>	<p>Complete ●</p> <p>We have worked with the Public Health team to deliver a campaign on plant-based eating and encouraging the use of food waste collection service.</p> <p>The council ran a Harvest Festival event at Braywick Nature Centre in October 2023 to engage residents with locally grown produce and had food demonstrations.</p>

2. ENERGY

Action	Progress
<p>KEY ACTION: Engage with residents/businesses on reducing building carbon emissions and review planning policy to improve the energy efficiency of new builds</p>	<p>Complete ●</p> <p>We have engaged with residents on RBWM Together and the council website including online posts which have been created to provide resident support and advice in their energy management. Regular pieces are included in the Residents Newsletter. The Royal Borough also took the lead in rolling out Solar Together across Berkshire, working with other Berkshire councils.</p> <p>The Sustainability SPD (Supplementary Planning Document) was adopted in July 2024. While this was later than planned it followed extensive stakeholder engagement and a full public consultation. This helps developers make better decisions when building and refurbishing properties and provides more detailed guidance than contained in the Interim Position Statement.</p>
<p>Objective 1: Reduce energy demand</p>	
<p>Facilitate energy efficiency improvements in domestic private premises</p>	<p>Complete ●</p> <p>The council is responsible for the local administration of national energy efficiency schemes. We have completed three phases of residential energy efficiency schemes which target those at risk of fuel poverty. These schemes, including Home Upgrade Grant and the Energy Company Obligation 4, have been launched in phases over the period of a year with the Greater South East Net Zero Hub supporting the borough with the scheme management. The schemes have encountered significant barriers at a national scale due to supply chain challenges, tight deadlines and scheme criteria limitations. A council officer sits on the steering group of the delivery of these schemes to try and positively influence the schemes.</p>

<p>Reduce energy demand across buildings and assets we own and operate</p>	<p>On track ●</p> <p>The council has undertaken a review of over 40 buildings across its estate to deliver heat decarbonisations plans for its most energy intensive buildings.</p> <p>The council has received over £3 million of funding from the government's Public Sector Decarbonisation Scheme. This has enabled the council to deliver works across its estate including</p> <ul style="list-style-type: none"> • Six schools to replace oil boilers with air source heat pumps and install double glazing, insulation, and solar panels • LED lighting upgrades across 21 schools • Low Carbon upgrades to its buildings including a new low carbon heating system at the Guildhall <p>Automatic Meter readers (AMR) have been installed across almost all council water supplies. This allows monitoring for leaks and inefficient usage. The council has also worked with its utility suppliers to improve metering across its gas and electricity supplies. This means we can react more quickly to issues when they arise.</p> <p>Utility billing has been centralised to provide better oversight and management of utility contracts.</p> <p>The council has delivered a 22.6% reduction in its carbon emissions between 2018/19 and 2022/23. The reduction in 2022/23 was less than anticipated because of the unexpected rise in the carbon intensity of electricity supplied from the grid. While the council continues to buy 100% renewable energy, for the purposes of reporting, we use the carbon intensity factors provided by Government.</p>
<p>Incentivise developers to build zero carbon buildings and reduce water demand in line with Thames Water recommendations</p>	<p>Complete ●</p> <p>Sustainability Supplementary Planning Document (SPD) was adopted in July 2024 following extensive stakeholder engagement and a full public consultation. This document helps developers make better choices when building in our borough.</p>
<p>Incentivise developers to refurbish existing buildings to zero carbon home standard and reduce water demand in line with Thames Water recommendations</p>	<p>Complete ●</p> <p>Sustainability Supplementary Planning Document (SPD) was adopted in July 2024 following extensive stakeholder engagement and a full public consultation. This document helps developers make better choices when refurbishing existing buildings in our borough.</p>
<p>Objective 2: Decarbonising supply</p>	
<p>Encourage businesses and industry to decarbonise their energy supply and reduce emissions</p>	<p>Complete ●</p> <p>The council set up its Climate Partnership to engage with business, community groups and residents and create a forum with which all stakeholders in the borough could collaborate to deliver action on climate.</p> <p>The council will be offering Carbon Literacy training to local businesses through the Climate Partnership in 2025 to support their transition to a low carbon economy.</p>

Engage housing associations around a programme of retrofitting homes with low carbon heating/power solutions	<p>Planned ●</p> <p>Regular meetings are underway with housing providers to discuss opportunities to support each other in energy efficiency works.</p> <p>The Government publish figures on numbers of properties that reach an EPC rating of C by local authority and tenure so no additional framework required.</p>
Encourage carbon intensive (e.g. oil) heated homes to adopt lower carbon alternatives	<p>Complete ●</p> <p>Funding, through the Home Upgrade Scheme, secured from government to support roll out of low carbon heating systems for residents that currently use oil as their main heating source.</p> <p>Sustainability Team attended a number of the World Café events run by the council to encourage residents to switch to low carbon heating systems along with advice on fuel poverty and financial support.</p> <p>More information: Home energy grants</p>
Objective 3: Increase renewable energy generation	
Scope decentralised energy (e.g. solar, heat networks, heat pumps) potential across the borough	<p>Complete ●</p> <p>Heat network mapping undertaken by consultants across the Borough to understand opportunities.</p> <p>Sustainability SPD (Supplementary Planning Document) asks developers to consider energy sharing and storage solutions.</p>
Incentivise renewable energy uptake among Royal Borough residents and businesses	<p>Complete ●</p> <p>The council launched Solar Together in 2022 and working with other Berkshire councils rolled it out across the county in 2023. The scheme supports residents to invest in renewable energy options and achieve a better market price by purchasing together. In phase 1, 109 solar arrays were installed and 8 batteries, in phase 2, 97 solar arrays were installed, 1 battery and 4 EV (electric vehicle) chargepoints. The installed capacity under the Solar Together scheme is 392 KW.</p>
Increase requirement for renewables generation in new build	<p>Complete ●</p> <p>Sustainability SPD (Supplementary Planning Document) was adopted in July 2024 following extensive stakeholder engagement and a full public consultation. The SPD provides guidance on ensuring at least 12% of a building's energy is delivered using on-site renewable energy. It also requires demonstration of other low carbon building elements.</p>

3. THE NATURAL ENVIRONMENT

Action	Progress
<p>KEY ACTION: Create a Biodiversity Action Plan (BAP) for the borough</p>	<p>Complete ●</p> <p>The Biodiversity Action Plan (BAP) was developed in close collaboration with local conservation groups and the Berkshire, Buckinghamshire and Oxfordshire Wildlife Trust (BBOWT) and published in 2022.</p> <p>The purpose of the biodiversity action plan is to create a robust set of steps that helps us reverse the decline in our natural environment and through better data, partnerships and direct-action increase biodiversity across the borough.</p>
<p>Objective 1: Protect and enhance our natural environment</p>	
<p>Work with partners to develop a Local Nature Recovery Strategy (LNRS) and establish a Nature Recovery Network</p>	<p>Complete ●</p> <p>The Local Nature Recovery Strategy (LNRS) is a requirement set by national government. Local Nature Recovery Strategies (LNRSs) are spatial strategies to recover nature across England: part of the 2021 Environment Act. Together, they will cover the country in a Nature Recovery Network (NRN).</p> <p>The council is proud to lead this work as the responsible authority for Berkshire and create a Berkshire Local Nature Recovery Strategy. We have engaged with 100s of stakeholders through physical and virtual events and will be launching a formal public consultation ahead of planned approval and publication in Spring/Summer 2025.</p> <p>The LNRS builds on our aim of ‘bigger, better, more connected’ spaces for nature.</p>
<p>Identify opportunities for rewilding on sites we manage for nature conservation</p>	<p>Complete ●</p> <p>We are working with the Wilds groups to rewild sites. Successful projects include:</p> <ul style="list-style-type: none"> • rewilding parts of Ockwells and Battlemead Nature Reserves. • new mowing regime at Kidwells. • additional conservation area established at Windsor Cemetery. • joint conservation plan with Wild Windsor.
<p>Continue and extend the council’s new mowing regime on roadside verges for the benefit of wildflowers</p>	<p>Complete ●</p> <p>We’ve assigned 15 verges as ‘Wildlife Verges’, these verges are mowed less often to create a better habitat and increase the biodiversity of our land.</p> <p>Verge on the Wild Side is a new initiative started in 2024 which gives residents and community groups the opportunity to adopt a verge and improve the biodiversity of their local area.</p>

<p>Develop a biodiversity baseline and metrics for the borough as part of the biodiversity action plan</p>	<p>Complete ●</p> <p>The target set by government is to have 30% of land for nature by 2030. As part of the development of the Biodiversity Action Plan the council identified 23.5% of the borough that is currently available for nature (BAP, p.7). We are confident of achieving the 30% target by 2030 and are ahead of our trajectory. A review undertaken by Thames Valley Environmental Records Centre in 2023 states that 26.4% of the borough is land for nature.</p>
<p>Increase tree cover in the Royal Borough to sequester carbon dioxide emissions. Create a new woodland and tree management strategy in 2021 to support our tree cover, carbon sequestration and wider biodiversity ambitions</p>	<p>Planned ●</p> <p>Over the last 4 years at Thrift Wood, Ockwells Park, 30,000 trees have been planted to aid nature recovery. As part of the Queen's Platinum Jubilee Tree Planting Celebration, the council organised a family tree planting day at on the 15th January 2022, which attracted 250 volunteers and together we planted over 600 trees.</p> <p>In 2024, we offered funding for community orchards to residents, schools, parishes and other organisations and shared £30k between the nine successful applicants.</p> <p>The Woodland and Tree Strategy will be developed in 2025 having been postponed due to resource constraints.</p>
<p>Objective 2: Green our towns and urban areas</p>	
<p>Work with developers to provide green infrastructure in new town centre developments</p>	<p>Complete ●</p> <p>In July 2024 the council adopted the Sustainability Supplementary Planning Document (SPD). The SPD supports the policies of the Borough Local Plan by setting out measures to design and construct new development to improve its environmental performance and reduce its environmental impact, including mitigating and adapting to climate change. The SPD aims to contribute towards attaining the council's commitment to delivering carbon reduction and improving biodiversity.</p>
<p>Deliver the biodiversity net gain requirement for developers through the planning system</p>	<p>Complete ●</p> <p>Biodiversity net gain (BNG) is a way of creating and improving natural habitats. BNG makes sure development has a measurably positive impact ('net gain') on biodiversity, compared to what was there before development. As outlined in the Sustainability Supplementary Planning Document (SPD), developers are required to undertake a BNG Assessment using the DEFRA Metric and submit the assessment alongside their planning application, with an expectation to achieve a minimum 10% net gain</p>
<p>Increase biodiversity in public owned open spaces such as parks and cemeteries</p>	<p>Complete ●</p> <p>In addition to the rewilding (action 1.2), recent activity has included establishing log piles in Trinity wildlife garden, pond clearance and hedge-laying at Battlemead.</p>
<p>Objective 3: Increase awareness of biodiversity</p>	
<p>Provide biodiversity training to planning officers</p>	<p>Complete ●</p> <p>Training has been provided for embedding the Sustainability SPD (Supplementary Planning Document), Carbon Literacy training, biodiversity training including on Biodiversity Net Gain.</p> <p>Two ecologists are employed by the council to support biodiversity net gain and protection of species.</p>

<p>Set up biodiversity and climate education sessions at Braywick Nature reserve</p>	<p>Complete ●</p> <p>Braywick Nature Reserve have been running education sessions for over 20 years. Currently 1500 children a year from schools, scouting groups and youth groups attend the centre. Popular special events open to the wider public include Braywick Nature Festival, Halloween, Dawn chorus and Plastic Blitz are always popular.</p> <p>Braywick Nature Centre have a page on RBWM Together, a newsletter and are also active on social media including Facebook and Instagram. For all the handy links in one place visit Braywick Nature Centre on Linktree.</p>
<p>Offer conservation volunteering and awareness training for council employees and partners</p>	<p>Complete ●</p> <p>31 colleagues and 8 members have completed the Carbon Literacy training.</p> <p>Volunteering opportunities include Good Gym, Waterways, Conservation volunteers, Verge on the Wild Side and Friends of Parks and Green Spaces.</p> <p>WMCV</p> <p>The 'Wilds' of the Royal Borough of Windsor & Maidenhead</p> <p>GoodGym - Do Good, Get Fit</p> <p>Friends of Parks & Green Spaces</p> <p>Verge on the Wild Side</p> <p>Maidenhead Waterways</p>
<p>Encourage wildlife friendly gardening</p>	<p>Complete ●</p> <p>Wildlife gardens award has been extended to the whole borough supported by the Climate Partnership.</p>
<p>Engage with landowners, especially those who have a significant influence over biodiversity in the borough</p>	<p>Complete ●</p> <p>The Rural Forum meets twice a year with six councillors and individuals interested in rural affairs. This has been an effective way of engaging with key stakeholders including large farms and private landowners. There were also three engagement sessions specifically for farmers and landowners as part of the process of writing the LNRS</p>

4. TRANSPORT

Action	Progress
<p>KEY ACTION: To prepare a new Local Transport Plan that demonstrates our contribution to meeting boroughwide carbon reduction targets</p>	<p>Planned ●</p> <p>Electric Vehicle Chargepoint Implementation Plan (EVCIP), Bus Service Improvement Plan (BSIP) and Local Cycling and Walking Infrastructure Plan (LCWIP) documents have been adopted and form key pillars of the new Local Transport Plan(LTP). The Local Transport Plan Vision and Themes consultation has been held.</p> <p>More information: Transport Local Transport Plan Visions and Themes</p>
<p>Objective 1: Transform transport and digital infrastructure to reduce the need for travel</p>	
<p>As part of development planning, identify opportunities to reduce the need to travel in new 'growth areas</p>	<p>Complete ●</p> <p>The South West Maidenhead Development Framework SPD (Supplementary Planning Document) and Sustainability SPD both include important guidance for developers to ensure sustainable transport principles are built in from the start.</p> <p>More information: Adopted supplementary planning documents (SPDs) Royal Borough of Windsor and Maidenhead (rbwm.gov.uk)</p>
<p>Facilitate roll out of digital infrastructure in the borough to enable flexible working</p>	<p>Complete ●</p> <p>We have worked with broadband providers to facilitate new infrastructure to increase Full Fibre coverage (a faster internet connection), including engaging with residents at local meetings.</p> <p>We are involved in a project run by the Berkshire Digital Infrastructure Group (DIG), made up of the Thames Valley Berkshire Local Enterprise Partnership and our neighbouring Berkshire Local Authorities to improve digital infrastructure across the region.</p> <p>We have facilitated the mapping of street furniture, to support the small cell deployment in hard-to-reach areas, creating further connectivity opportunities.</p>
<p>Trial Smart City concepts in the Royal Borough</p>	<p>Complete ●</p> <p>TVLEP (Thames Valley Local Enterprise Partnership) funded LoRaWAN (Long Range Wide Area Network) rolled out across the borough alongside the rest of Berkshire.</p>
<p>Objective 2: Create infrastructure to shift journeys to low/zero carbon modes e.g. cycling, public transport</p>	
<p>Remove barriers to walking and cycling through delivery of the 2018-2028 Cycle Action Plan</p>	<p>Complete ●</p> <p>Adopted a Local Cycling & Walking Infrastructure Plan for the borough in 2022, building on the Cycling Action Plan. A prioritised project pipeline has emerged for infrastructure projects. Some of these have been delivered such as Kings Street improvements in Maidenhead.</p> <p>More information: Transport</p>

<p>Reduce transport emissions at sensitive locations to improve air pollution and encourage walking/ cycling</p>	<p>Complete ●</p> <p>Pilot projects undertaken looking at signage and behaviour change at several school sites across the borough.</p> <p>Five additional particulate matter monitoring systems have been installed in 2023/24, one in each of the Air Quality Management Areas in the borough. Permanent monitoring stations will then be installed in 2025.</p>
<p>Investigate options for demand responsive transport (DRT) in the borough and implement a trial through external funding</p>	<p>Complete ●</p> <p>Demand Responsive Transport has been introduced in the borough following a successful trial. The service, Go2Gate, is a minibus for the Dedworth area that is more like your own personal taxi that you book on an easy-to-use app. It will pick you up close to home and take you to Heathrow Terminal 5, and home again, any day of the week at the times that suit you.</p> <p>More widely, bus services in the borough are being developed with a Bus Service Improvement Plan (BSIP) and Enhanced Partnership approach adopted. The Enhanced Partnership is a formal board consisting of bus operators and council members to work together for shared benefits. A bus network review has been undertaken to secure and grow public transport services in the borough.</p>
<p>Launch a car sharing scheme for the Royal Borough</p>	<p>Complete ●</p> <p>There are 2 cars available in Maidenhead and a national map of car club schemes is available. Discussions ongoing with developers regarding introduction of further car club vehicles.</p> <p>Information pages on on-demand car and van access introduced on the council website.</p>
<p>Objective 3: Invest in zero emission vehicle infrastructure</p>	
<p>Increase electric vehicle charging capability and explore cycle charging in the Royal Borough</p>	<p>Planned ●</p> <p>Pilot sites introduced in 2022 and the Electric Vehicle Chargepoint Implementation Plan (EVCIP) was adopted by council February 2023. The council has secured nearly £1 million from Government to fast track the rollout of new EV charging points. There is a target of 75 new chargepoint sockets on streets/in car parks each year for next 10 years. Cycle charging is not currently a viable option due to the risk of fire damage from faulty batteries.</p>
<p>Set new emissions standards for taxis and buses</p>	<p>Planned ●</p> <p>This will be set out in the new Local Transport Plan. The themes of the Local Transport Plan were open to consultation in 2024.</p>